

# Photometric Report

ELP PAR – Narrow

MARTIN PROFESSIONAL R&D OPTICAL LABORATORY

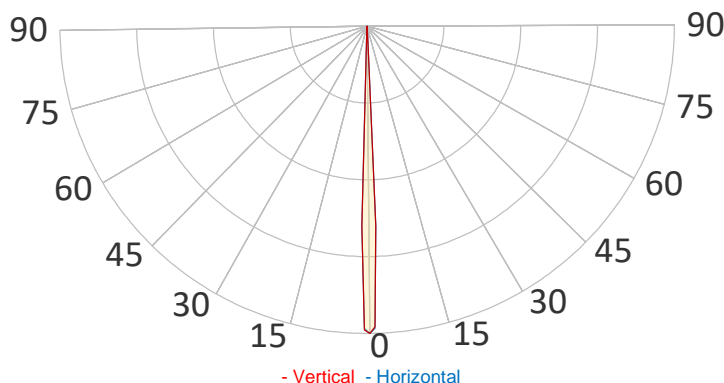
## GENERAL SPECIFICATIONS

Total Fixture Output:	3500 lm
Light Engine Output:	7000 lm
Efficacy:	15 lm/W
Lens Option:	N/A
Beam Angle (50%):	4,2-38,7°
Field Angle (10%):	5,1-58,6°
Cut-off Angle (3%):	5,7-69,6°
CRI:	70+
CQS:	83
TM-30 Rf:	77
TM-30 Rg:	117
TLCI:	61
Color Temperature:	6500 K

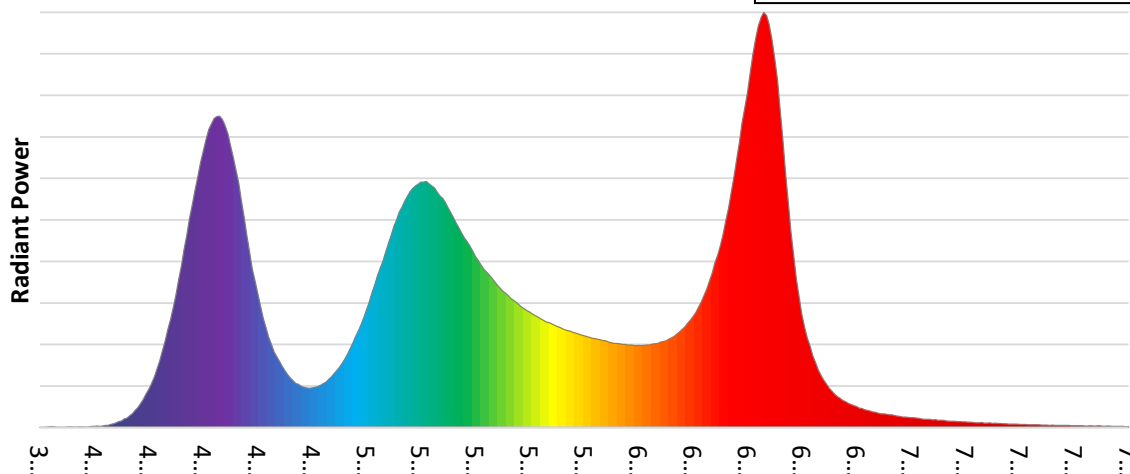


## SAMPLE MEASUREMENT

POLAR PLOT



SPECTRAL DISTRIBUTION



Catalog Number:	MAR-90800000
Measured Output:	1823 lm
Measured Peak:	393154 cd
Consumed Power:	237 W
Efficacy:	7,7 lm/W

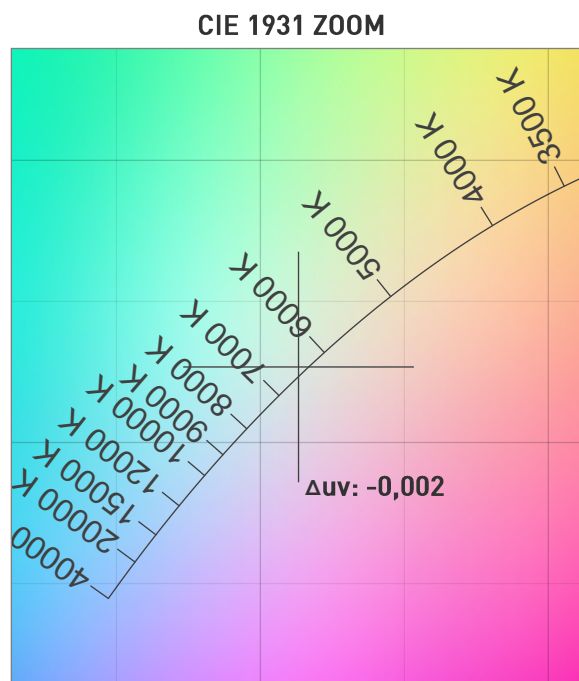
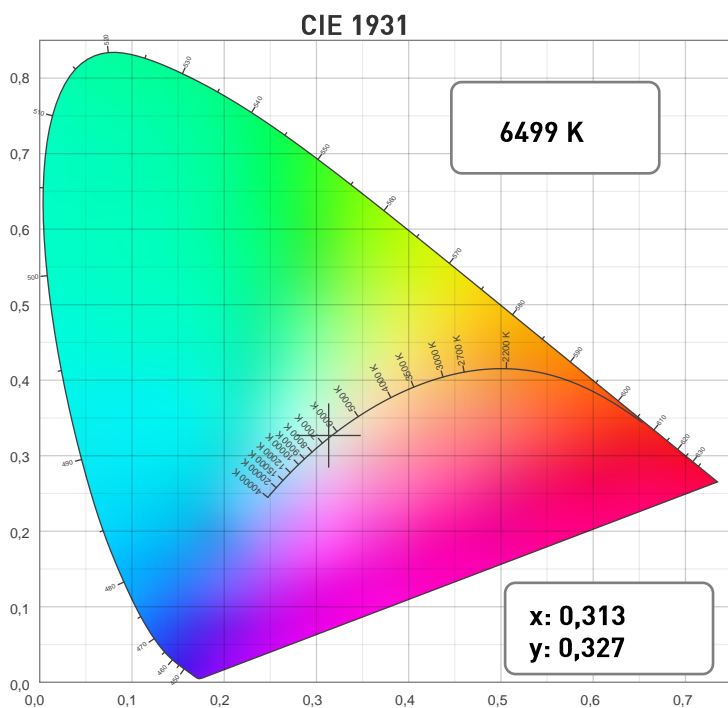
Beam Angle (50%):	4,3°
Field Angle (10%):	5,4°
Cut-off Angle (3%):	6,1°

Measurement Condition:	
Ambient Temperature:	25° +/- 5° C
AC Supply:	230V/50Hz
Fan Mode:	Regulated
Fixture Warm-up Time:	30 minutes

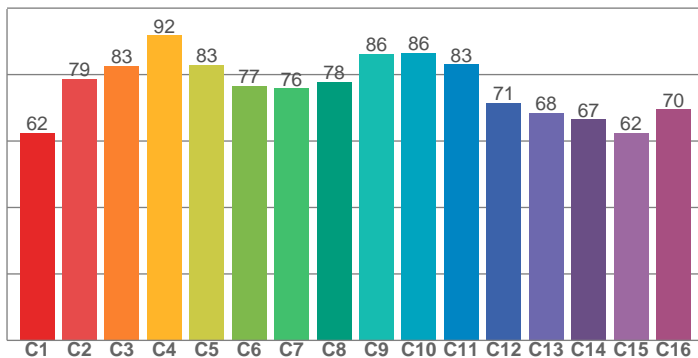
# Photometric Report

ELP PAR – Narrow

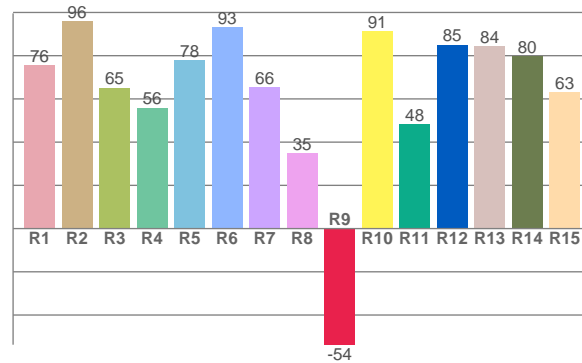
## CHROMATICITY



TM30: 77,6



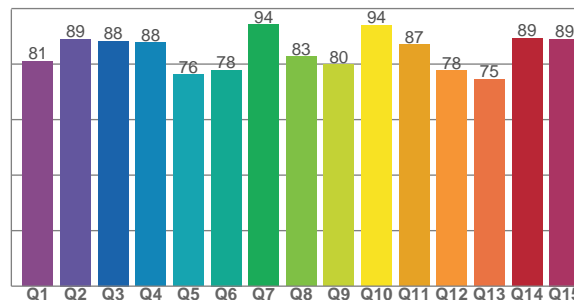
CRI: 70,5 (R1-R8)



## COLOR PARAMETERS

Color Temperature	Color Rendering Index	Red Component	Color Fidelity	Color Gamut
CCT	CRI	CRI R9	TM30 Rf	TM30 Rg
6499 K	70,5	-53,7	77,6	117,8

CQS: 83,4



Television Lighting Consistency Index	Color Quality Scale	Color Coordinate CIE 1931	Color Coordinate CIE 1931	Color Coordinate CIE 1964	Color Coordinate CIE 1964	Color Deviation from Black Body
TLCI	CQS	x	y	u	v	$\Delta uv$
61	83,4	0,313	0,327	0,199	0,311	-0,002

# Photometric Report

ELP PAR – Narrow

TM30

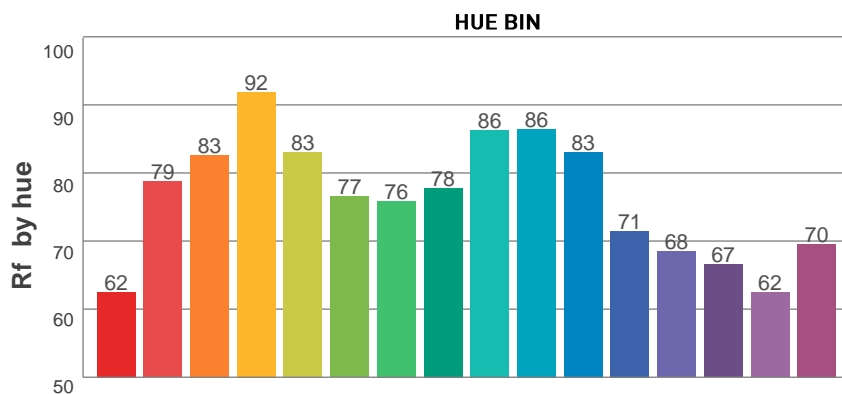
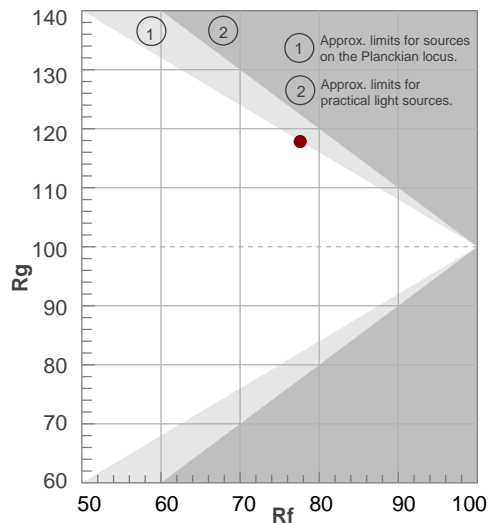
**Rf 77,6**

Fidelity index Rf

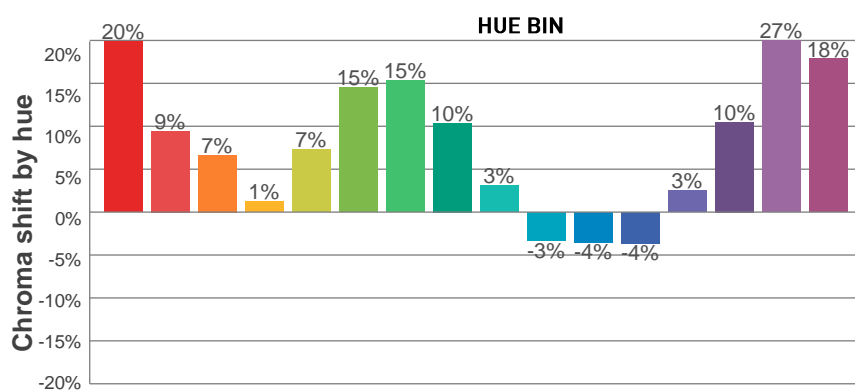
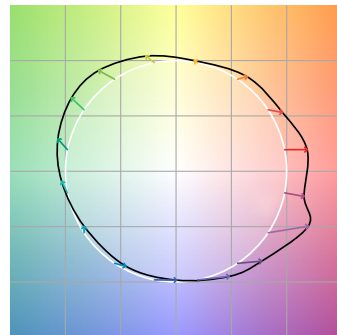
**Rg 117,8**

Gamut index Rg

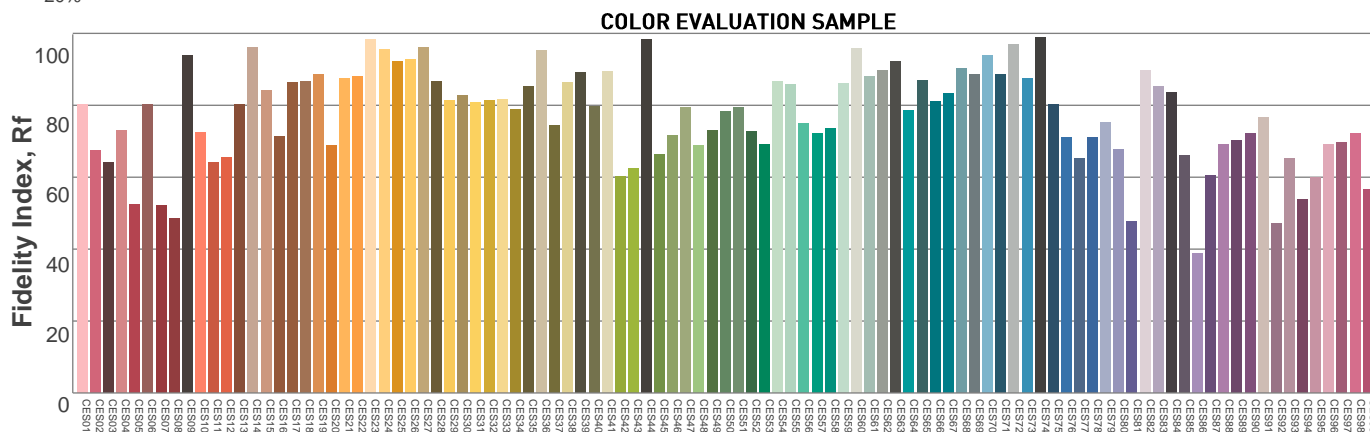
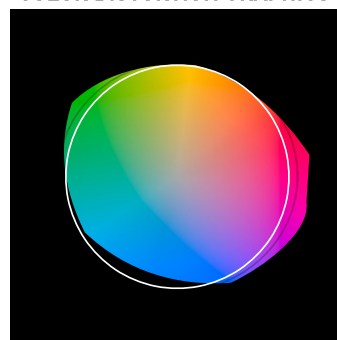
Hue Bin	R <sub>f</sub>	Graphic shifts (%)	
		Chroma	Hue
1	62	20%	-4%
2	79	9%	-9%
3	83	7%	-6%
4	92	1%	3%
5	83	7%	6%
6	77	15%	8%
7	76	15%	-3%
8	78	10%	-8%
9	86	3%	-11%
10	86	-3%	-5%
11	83	-4%	10%
12	71	-4%	20%
13	68	3%	29%
14	67	10%	19%
15	62	27%	25%
16	70	18%	0%



COLOR VECTOR GRAPHICS



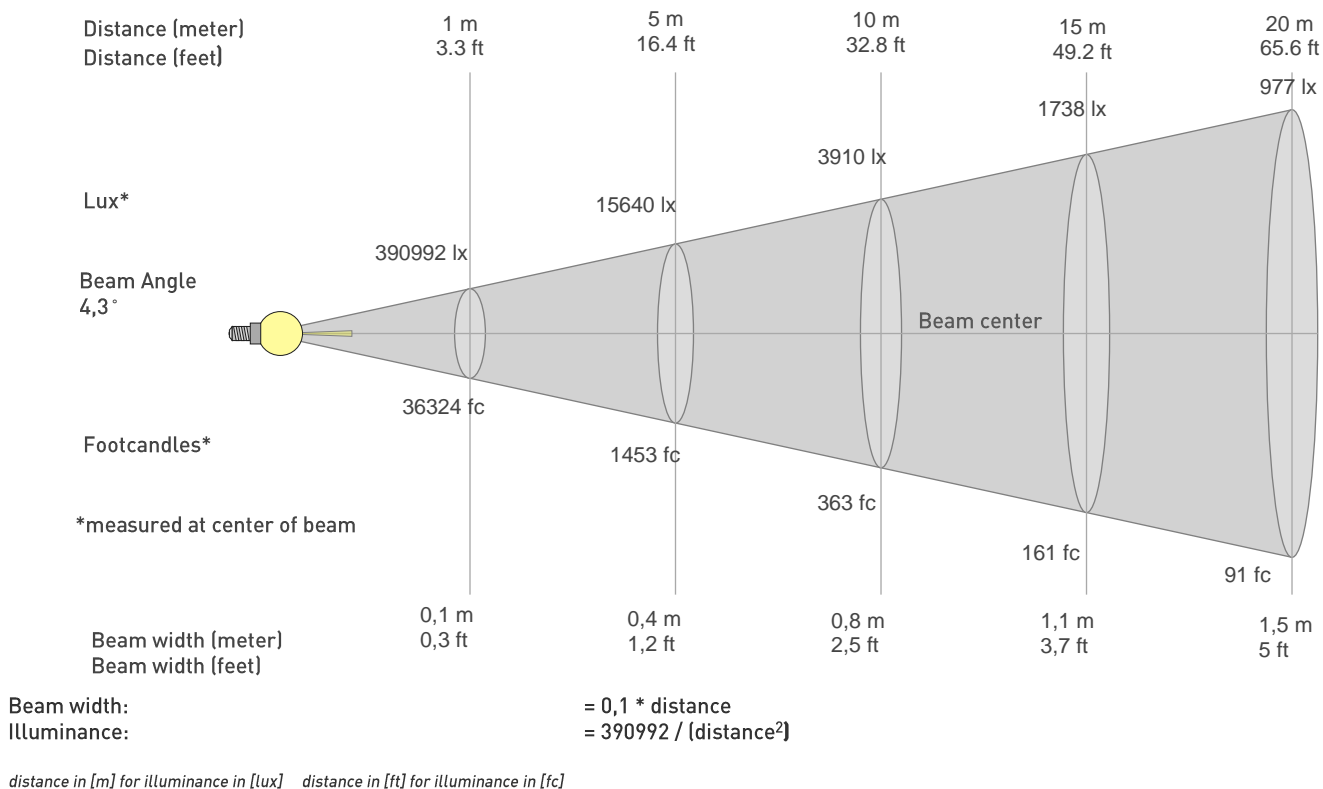
COLOR DISTORTION GRAPHICS



# Photometric Report

ELP PAR – Narrow

## BEAM DETAILS



## BEAM ILLUMINANCE FROM 1-20M

1m	2m	3m	4m	5m	6m	7m	8m	9m	10m	11m	12m	13m	14m	15m	16m	17m	18m	19m	20m
3,3ft	6,6ft	9,8ft	13,1ft	16,4ft	19,7ft	23ft	26,2ft	29,5ft	32,8ft	36,1ft	39,4ft	42,7ft	45,9ft	49,2ft	52,5ft	55,8ft	59,1ft	62,3ft	65,6ft
390992lx	97748lx	43444lx	24437lx	15640lx	10861lx	7979lx	6109lx	4827lx	3910lx	3231lx	2715lx	2314lx	1995lx	1738lx	1527lx	1353lx	1207lx	1083lx	977lx
36324,3fc	9081,1fc	4036fc	2270,3fc	1453fc	1009fc	741,3fc	567,6fc	448,4fc	363,2fc	300,2fc	252,3fc	214,9fc	185,3fc	161,4fc	141,9fc	125,7fc	112,1fc	100,6fc	90,8fc

